

IN THE BEGINNING



THERE WAS.....

# Bow Valley Waste Management Commission (BVWMC) FRANCIS COOKE REGIONAL CLASS III LANDFILL

## Acceptable Materials:

- ✓ Dry inert waste
- ✓ Untreated wood
- ✓ Scrap metal
- ✓ Furniture, appliances
- ✓ Roofing materials
- ✓ Carpet & underlay
- ✓ Glass & ceramics
- ✓ Sand & gravel

## Unacceptable Materials:

- ✗ Liquid waste
- ✗ Food waste
- ✗ Pesticide containers
- ✗ Pathogenic wastes
- ✗ Oil or paint products
- ✗ Manure or cadavers
- ✗ Explosive/chemical
- ✗ Hazardous or Restricted

## Recycle Compounds:

Tires

Metals

Appliances

Auto-wrecks

Cardboard

Asphalt

Concrete

Scrub and Brush

In case of emergency contact Emergency Dispatch DIAL 911,  
Pollution Emergency Response 1 (800) 222-6514,  
Manager of the BVWMC 609-0321

Questions? Ask the Landfill Attendant at 673 2708

BVWMC Members:



With Grant Assistance from.






























A man wearing a white cap, safety glasses, earplugs, and a high-visibility orange vest over a dark blue long-sleeved shirt is sitting on a wooden chair. He is surrounded by a large pile of debris, including cardboard boxes, plastic, and wood. A thought bubble is positioned above his head, containing the text "Hmmm, what if we did this differently?".

Hmmm,  
what if we  
did this  
differently?



We could sort it  
or, maybe not  
mix it up in the  
first place?







*Bow Valley Waste*  
MANAGEMENT COMMISSION

# **FRANCIS COOKE REGIONAL CLASS III LANDFILL & RESOURCE RECOVERY CENTRE**

**ONLY NON-HAZARDOUS, DRY AND INERT MATERIAL IS ACCEPTED  
FOR DETAILS OF MATERIALS ACCEPTED & PRODUCT SALES PLEASE CALL:  
403-673-2708 OR VISIT [BVWASTE.CA](http://BVWASTE.CA)**



**SITE MANAGER:  
EMERGENCY RESPONSE:  
POLICE:**

**403-688-1538  
DIAL 911  
403-678-5516**

**ENVIRONMENTAL EMERGENCY RESPONSE: 1-800-222-6514  
RURAL EMERGENCY ACCESS IDENTIFICATION: 90008**



TOWN OF  
*Banff*



Town of  
**CANMORE**









MAXIMUM  
30





















**Bow Valley Waste**  
MANAGEMENT COMMISSION

## FRANCIS COOKE LANDFILL AND RESOURCE RECOVERY CENTRE

### 2019 RATES

**HOURS & CONTACT:** Open 8 am to 4 pm Monday to Saturday. Closed statutory holidays. All vehicles must report to the scale. To ensure "on-time" acceptance please be at the site by 3:30 pm. No loads accepted later than 3:45 pm.

**Office:** 403-673-2708 **Fax:** 403-673-2709 **Email:** Landfill@bv.waste.ca **Directions:** BVWaste.ca.

**LITTER:** Loose litter must be bagged. Please do not litter on roadways and respect our litter policy. Extra fees are charged for loads containing loose litter or not adequately tarped. Loads with loose litter may be refused.

**WEATHER:** Please keep wind in mind for safe unloading. Current weather conditions are available at BVWaste.ca.

**ACCEPTED MATERIALS:** The Francis Cooke Landfill is a "Class III" (inert, dry waste) facility. No liquids, food, kitchen garbage, or hazardous substances are accepted. A minimum administration fee of \$100.00 plus other handling charges apply to illegally tipped materials. Please call 403-673-2708 if you are unsure whether your materials can be accepted.

#### TIPPING FEES FOR LANDFILLED WASTE (\$/tonne)

UNSORTED: Loads with more than 25% (by volume) of easily recoverable material.	230.00
SORTED: Loads that contain 25% or less (by volume) of easily recyclable material.	115.00
<b>MINIMUM FEES FOR LOADS UNDER 300 Kg:</b>	
Residents And Not For Profit \$10.00 per tonne	Commercial \$20.00

#### TIPPING FEES FOR SEPARATED MATERIALS IN ACCEPTABLE CONDITION (\$/tonne)

Metal and White Goods	20.00
Asphalt Smaller than 1m X 1m	30.00
Concrete Smaller than 1m X 1m	60.00
Asphalt and Concrete Larger than 1m x 1m	100.00
White Wood (Kiln-dried lumber, plywood, strand board)	84.00
Asphalt Shingles	75.00
Asphalt Shingles mixed with other materials	250.00
Drywall	60.00
Drywall mixed with other materials	250.00
Clean Cover Material	14.00
Dirty Cover Material	55.00
Scrub and Brush	60.00
Yard and Garden Material	40.00
Glass	70.00
Electronics	No Charge

#### ADDITIONAL CHARGES MAY APPLY

Surcharge on loads from outside of Towns of Banff, Canmore and Municipal District of Bighorn	7.50	\$ / Tonne
Freon Containing Units: Residential, without Freon removal certificate	5.00	\$ / Unit
Freon Containing Units - Commercial, without Freon removal certificate	10.00	\$ / Unit
Mattresses/Box springs/Couches - Residential	10.00	\$ / Unit
Mattresses/Box springs/Couches - Commercial	25.00	\$ / Unit
Chemically Treated Wood - Small amounts	44.00	\$ / Unit
Chemically Treated Wood - Large amounts	220.0	\$ / Tonne
Special Handling / On-site After Hours (\$45.00 per 15 minutes)	180.0	\$ / Hour

#### PRODUCT SALES

(\$/Tonne when product is available, Plus \$0.25 Community Aggregate Levy applies where indicated by asterisk )

Topsoil/Compost Blend	16.00	River Rock 1" to 16" *	25.00
Recycled Asphalt	7.50	River Rock 16" to 36" *	30.00
Recycled Concrete	2.50	Rundle Rock 1" Minus	20.00
Sand/Gravel Self-Load *	2.25	Rundle Rock 1" to 2"	25.00
Landscape Rock *	30.00	Rundle Rock 2" to 3"	30.00
Wood Chips	8.90	Rundle Rock 3" to 6"	40.00
		Rundle Rock 6" or Larger	85.00









































-DW-3060 SA-



Doppstadt

DEERE

CAUTION  
GRINDING  
IN PROCESS  
STAY BACK





























PEAKLINE  
ROOFING  
403 609 1700

PEAKLINE  
ROOFING  
403 609 1700













JMB  
WASTE  
MANAGEMENT  
762-2162  
NO FOOD WASTE

Danco  
EQUIPMENT  
CULBERTSON, MONTANA  
406-838-1111

86783

SLOW













T450



Bobcat.









































STOP

REPORT TO  
ATTENDANT  
BEFORE  
DUMPING



TARE 6,500 kg  
GVW 15,675 kg

FREIGHTLINER

No Smoking  
LITTER MUST BE BAGGED  
Littering is prohibited on all sites and is a violation of the  
Environment Canada Act. Littering is also a violation of the  
Municipal Act and can result in fines. Please use the provided  
bins for recycling and garbage.

Report In Here  
No Smoking  
on Site  
Open 8:00am  
Last load 3:45pm  
Closed 4:00pm sharp

"CHILDREN  
& PETS  
MUST REMAIN  
IN THE  
VEHICLE"


































SCRUB & BRUSH















# electronics collection site



Call 1.888.999.8762 or visit [www.albertarecycling.ca](http://www.albertarecycling.ca)



Computer, Server



Monitor



Printer



Laptop Computer



Mouse, Keyboard, Cables,  
Computer Speakers



Television (40" or less)













Heatmaster

**B500**  
WOOD-BURNING BOILER





AUTO

MANUAL

Cold Start Mode

Alarm

Dashboard

Fuel Auger

Air Lock Motor

Air Lock Rev

Ash Auger

Damper Motor

Draft Fan

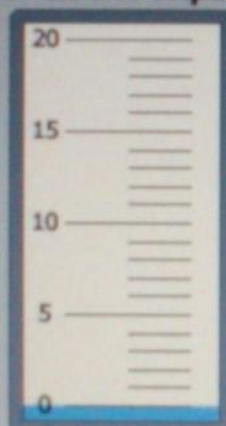
Igniter

Igniter Air

Agitator

Walker Motor

Air Lock Amps



54.3F.

Water Temp

50.0F.

Stack Temp

50.0F.

Firebox Temp

24.7%

o2

Dashboard

Water Temp

Ignition

o2 Control

Air Lock

Ash Auger

INFO

Alarms



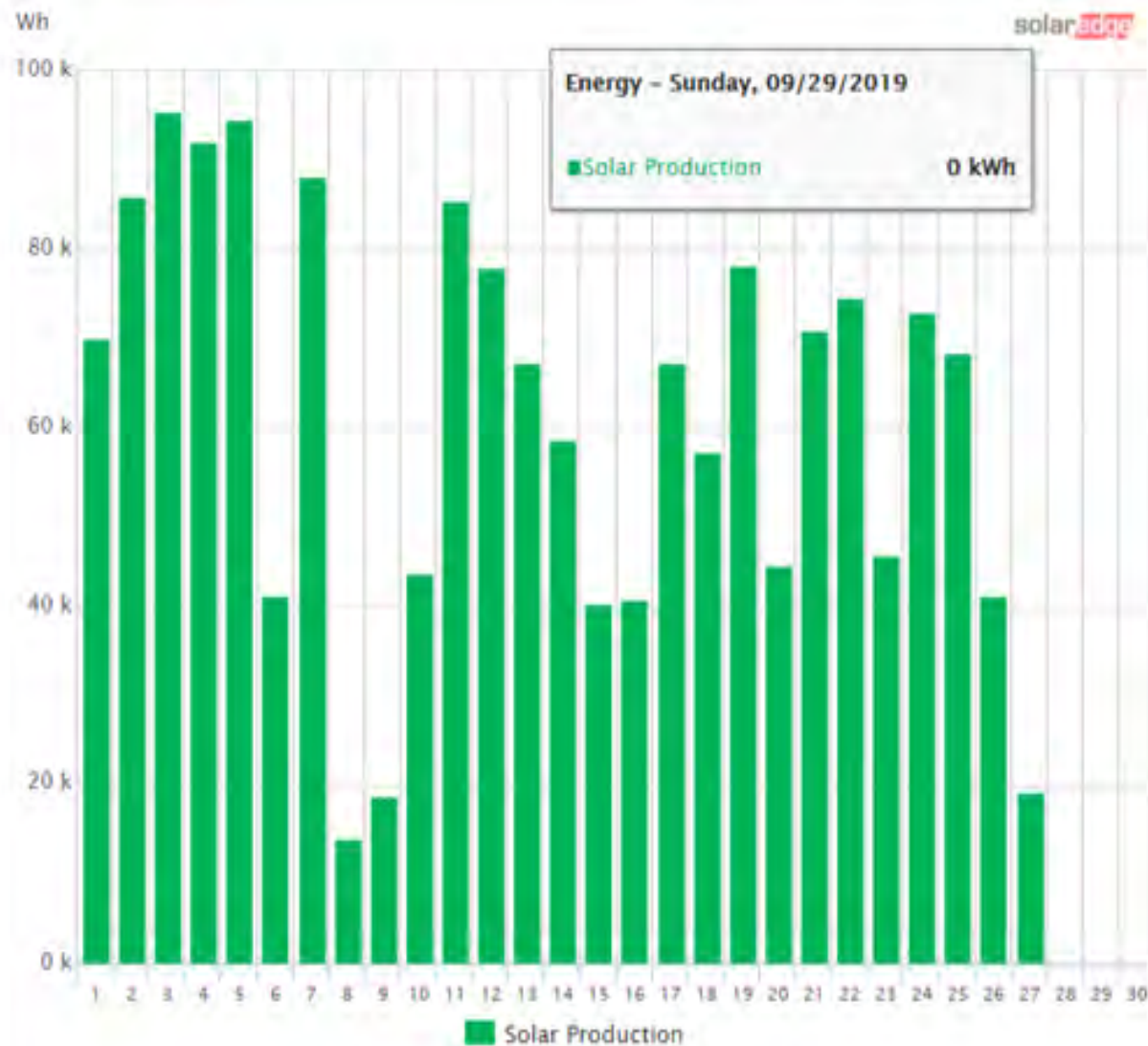








System Production: **1.66 MWh**



Sep

2019

Apply

◀ Previous month

Next month ▶

Peak Power

20 kWp



30% Chance of Light Snow

-7 °C

Feels like -11 °C

Wind NE, 8 km/h

Humidity 92 %

Sunrise at 07:38

Sunset at 19:23

Sunday



-6 - -8 °C

30% Chance of Snow

Monday



-3 - -11 °C

Cloudy

Tuesday



2 - -9 °C

Mostly Sunny

### Environmental Benefits



CO2 Emission Saved

**19,819.32 kg**



Equivalent Trees Planted

**66.23**










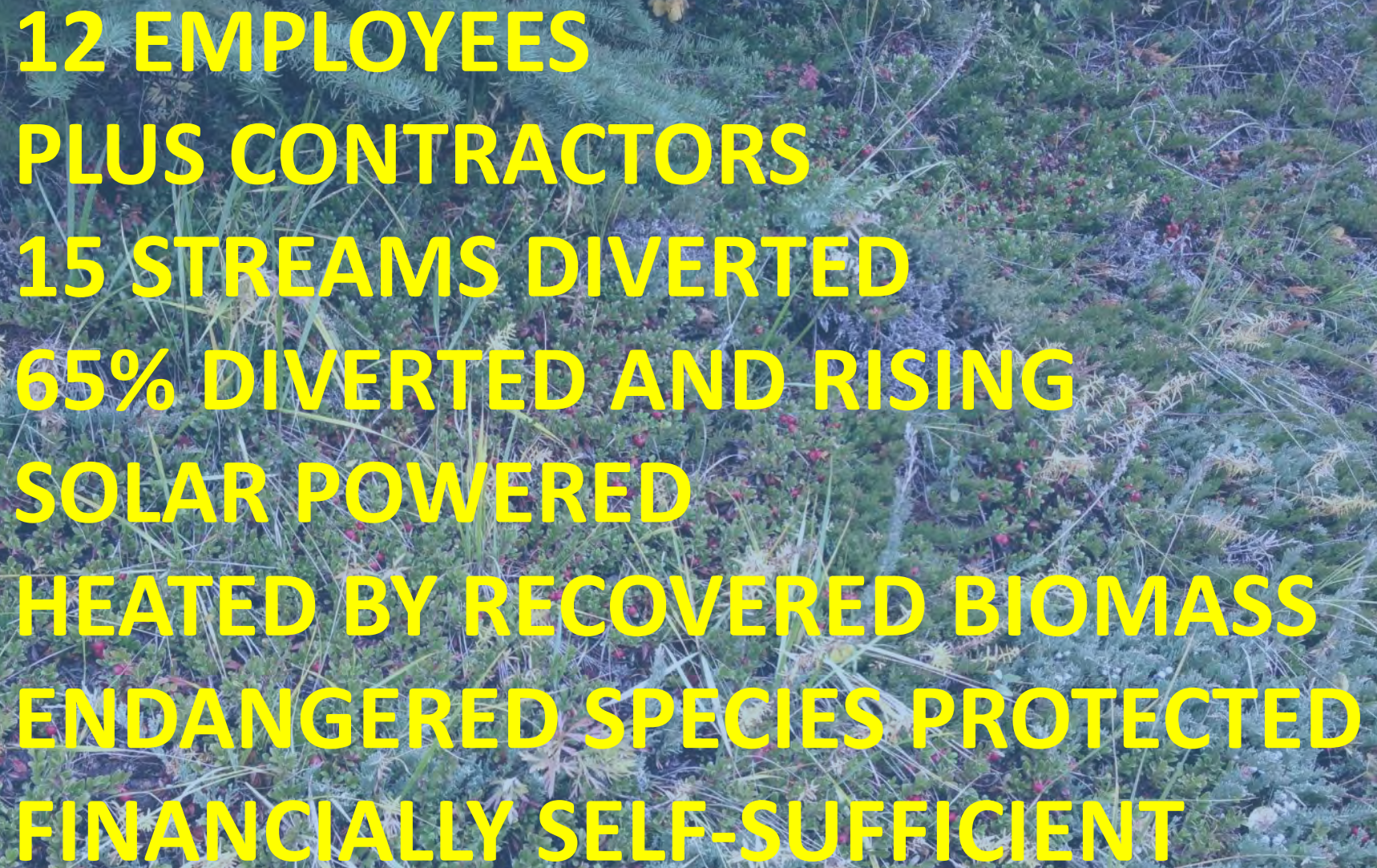


A photograph of two men in a forest. One man, wearing a blue jacket and glasses, is crouching and examining a plant. The other man, wearing a black and maroon jacket, is standing and looking down at the same plant. They are in a grassy area with many small red flowers. In the background, there are tall evergreen trees and a cloudy sky. Two blue speech bubbles are overlaid on the image, containing text.

Maybe if we get  
good at this  
circular thing  
we won't need  
bury stuff here.

And we can  
employ more  
people than it  
takes to just fill  
a hole.





**12 EMPLOYEES  
PLUS CONTRACTORS  
15 STREAMS DIVERTED  
65% DIVERTED AND RISING  
SOLAR POWERED  
HEATED BY RECOVERED BIOMASS  
ENDANGERED SPECIES PROTECTED  
FINANCIALLY SELF-SUFFICIENT**



A photograph of a forest during autumn. The trees are mostly birches with white bark and dark lenticels. The leaves are a bright, vibrant yellow, creating a dense canopy. The ground is covered with fallen leaves and some green undergrowth. The text is overlaid in the center of the image.

**A MORE CIRCULAR ECONOMY  
BROUGHT TO YOU BY  
THE STAFF AND DIRECTORS AND  
COMMUNITY PARTNERSS**





Inspection Sheets Must have equipment  
House's before handing in.

★ Topsoil Mixing 3 buckets of clean cover  
to 1 bucket of compost.

- Pull back scrub & brush
- excavate & screetime cell
- Clean mattresses

• Clean up Derm on compost pile  
\*Mount Fire extinguisher by the mattress trailer  
\*Place MAIN Face Signs & narrow

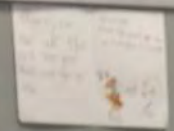
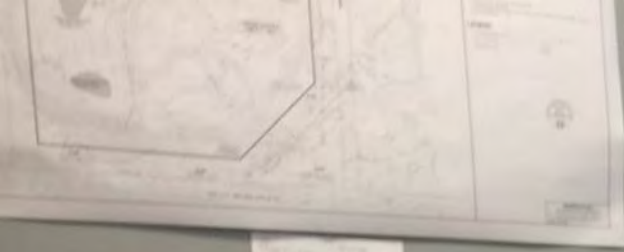
School TOURS  
Tues AM + PM  
Wed AM  
MON AM/PM/PM

Dodge P/U  
Sept 25-29

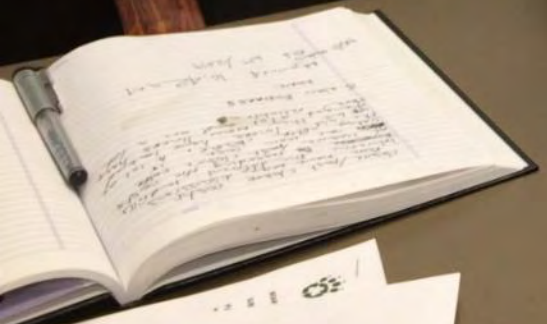








CHAIR  
Gus







ALWAYS LOOKING TOWARD...





### THE FUTURE

- Ensure facility well into the future to serving needs of community along with Bow Valley residents
- Continue to diversify revenue streams.
- Continue to improve diversion rates through programs.
- Ensure financial sufficiency.





*Bow Valley Waste*  
MANAGEMENT COMMISSION





*Bow Valley Waste*  
MANAGEMENT COMMISSION



Music  
“CROSSING THE UNIVERSE”

From the album  
A THOUSAND YEARS

by  
ESTHER GARCIA